



# ProRT Reverse Transcriptase

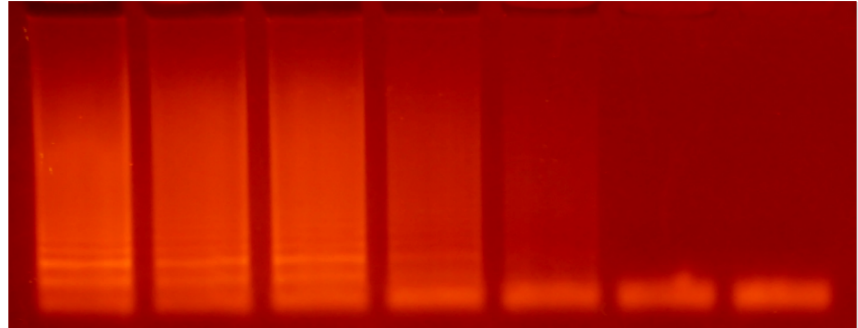
Datasheet, Version 2/2016

protean

On the bow of top biotechnology

Catalog #	1972
Synonyms	MMLV-RT, Thermostable RT H-
Type	Recombinant
Source	E. coli
Species	MMLV
Tag	His6
Form	Liquid

10<sup>4</sup> 10<sup>3</sup> 10<sup>2</sup> 10<sup>1</sup> 1 ct- RT-



Purity	>95% by SDS PAGE
Shipping	Ice pack

RT-LAMP assay detecting SARS-CoV-2 virus.  
Serial dilution of viral isolate (copy numbers).

## Introduction

Moloney Murine Leukemia Virus encoded sequence of reverse transcriptase was in silico optimized and produced in E.coli strain.

## Description

Highly active recombinant enzyme with an increased thermal stability. RNase H-minus fragment of reverse transcriptase suitable for all molecular techniques requiring reliable reverse transcriptase activity, such as RT-PCR and RT-LAMP assays. An increased thermal stability of this particular enzyme allows coupled reverse transcription at elevated temperatures up to 60°C, which results in an increased sensitivity and specificity of various detection techniques. The concentration is 200 U/ul.

## Application

RT-LAMP, RT-PCR, RT-qPCR

## Purification method

Affinity chromatography. The enzymes supplied by Protean Ltd. are manufactured in a certified environment under ISO 9001 and ISO 13485 international standards, which fully qualifies them for use in downstream GMP certified processes.

## Formulation

Storage buffer: 10mM Tris (pH 7.5), 50mM KCl, 1mM DTT, 0.1mM EDTA, 0.1% Triton, 50% glycerol.  
10x Reaction Buffer: Proprietary optimized buffer.

## Specificity

RNA

## Storage

Store at -20°C

**Analyte specific reagent (ASR) manufactured under ISO 13485.**

**Country of origin: Czech Republic**

Protean s.r.o.  
Pod Lesem 9  
373 16 Dobra Voda u CB  
The Czech Republic

ISO 9001 & ISO 13485  
CERTIFIED



www.protean.bio  
info@protean.bio  
+420 380 120 427