



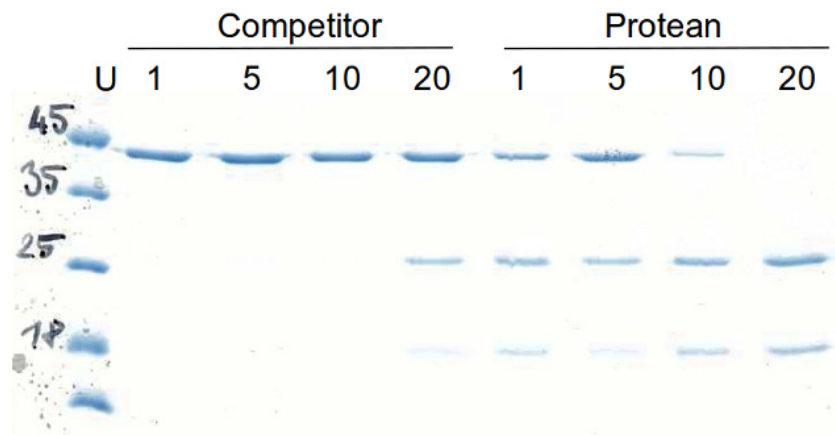
# TEV Protease His6

Datasheet, Version 2/2016

protean

On the bow of top biotechnology

Catalog #	1298
Synonyms	Endopeptidase, ProTEV
Type	Recombinant
Source	E. coli
Species	Tobacco etch virus
Tag	His6
Form	Liquid
Purity	>95% by SDS PAGE
Shipping	Ice pack



Cleavage of the control substrate #1409 by TEV protease (U) from competitor and Protean (4h, 30°C).

## Introduction

TEV protease is genetically modified sequence-specific cysteine protease from Tobacco Etch Virus (TEV). It is a member of chymotrypsin-like proteases. Due to its high sequence specificity it is frequently used for the cleavage of fusion proteins and removal of tags from recombinant proteins in vitro and in vivo.

## Description

This recombinant TEV enzyme is genetically improved 28 kDa version of the N1a protease from tobacco etch virus (TEV) that has been engineered to be more stable than native TEV protease with higher enzymatic activity. It contains His6 tag located at the N-terminus of the protein, which allows it to be immobilized on Ni-based affinity resins and removed from the cleavage reaction. It is active over a wide range of pH values (4-8.5) and temperatures (4-34C). The preferred recognition sequence is ENLYFQ|S(G,A), but it cleaves also motives EXLYFQ|S(G,A), where X could be any amino acid residue (in parenthesis are alternative residues). Please use our [TEV substrate #1409](#), [FRET TEV protease substrate #2586](#) or [TEV protease FRET activity assay kit #2808](#) as a positive control.

## Application

Cleavage of affinity tags from fusion proteins after protein purification. Cleaves fusion proteins directly in solution or immobilized on affinity resins. The enzymes supplied by Protean Ltd. are manufactured in certified environment under ISO 9001 and ISO 13485 international standards, which fully qualifies them for a use in downstream GMP certified processes. More [details here](#).

## Purification method

Affinity chromatography

## Formulation

50mM Tris pH 7,5, 1 mM EDTA, 5 mM DTT, 40% glycerol

## Specificity

Highly specific and active for its seven-amino acid sequence with minimal off-target effects. Activity more than 10,000 units per 1 mg protein. The activity depends on the type of target protein. The optimal amount of enzyme should be tested for each target protein.

## Storage

-20C, do not store at -80C

Protean s.r.o.  
Pod Lesem 9  
373 16 Dobra Voda u CB  
The Czech Republic

ISO 9001 & ISO 13485  
CERTIFIED



www.protean.bio  
info@protean.bio  
+420 380 120 427

**Analyte specific reagent (ASR) manufactured under ISO 13485.  
Country of origin: Czech Republic**

---

Protean s.r.o.  
Pod Lesem 9  
373 16 Dobra Voda u CB  
The Czech Republic

ISO 9001 & ISO 13485  
CERTIFIED



[www.protean.bio](http://www.protean.bio)  
[info@protean.bio](mailto:info@protean.bio)  
+420 380 120 427